

# ACT Enterprise

PC Application Software

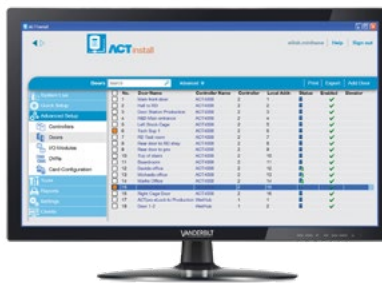


## Introduction:

ACT Enterprise software provides all the functionality required to manage your access control system and provides for up to 4,000 doors (100 with ACT Enterprise lite) and up to 50 PC Clients. The Software is intuitive, easy to use and scales from a single door to 4,000 doors.



ACT Manage



ACT Install



ACT Monitor



Site Maps



Rules Engine

## Features:

ACT Enterprise Features	Pro	Lite
Intuitive & easy to use software	Yes	Yes
Wizard & quick start buttons for common tasks	Yes	Yes
Design and print ID cards	Yes	Yes
System alarm acknowledgment	Yes	Yes
Activate/deactivate intruder alarm	Yes	Yes
Alarm notification including		
• Door Forced	Yes	Yes
• door ajar (door left open)	Yes	Yes
• fire alarm activation	Yes	Yes
• break glass / emergency door release monitoring	Yes	Yes
• supply voltage	Yes	Yes
Email Notificaiton on Alerts	Yes	Yes
doors (Max 4,000)	4,000	100
PC clients	50	1
Rules Engine	Yes	No
Mobile App with realtime live evacuation report	Yes	No
SPC Integration via alarm mapping in Site Maps (required 64bit Microsoft operating system)	Yes	No
Sitemaps with animated icons for door activity	Yes	No
OSDP (ACTpro 1500 controllers only, Max of 4 OSDP readers per controller)	Yes	Yes
Multi Tenant (max. 100 tenants per system)	Yes	No
ACT Monitor client (required for Challenge)	Yes	No
ACT Enterprise API (Addition license ACTENT_API)	Yes	No
Video integration (Eventys, Milestone, Hikvision, 3xLogic)	Yes	Yes
Plugin for Milestone	Yes	No
Note: Milestone and ACT Enterprise must reside on same server and requires ACTENT_API		
CSV Import Tool (used to import CSV files CSV Import Tool (used to import CSV files from third party or external systems, HR database and AD/LDAP	Yes	No
Lockdown	Yes	No
Muster Reporting (Evacuation report)	Yes	Yes
User Defined fields	10	10
Counting Areas	8	8
Strong Password Policy	Yes	Yes
Single Sign On with Active Directory (AD)	Yes	No
Assa Aperio Locks (Additional License ACTENT-WL)	Yes	No
IO Modules (4 IO Modules per ACTpro Controller)	Yes	Yes
Elevator Control (upto 32 floors)	Yes	Yes
Kone Integration (Additional License ACTENT-KONE)	Yes	No
Signature pad support for card holder signatures	Yes	No

## Ordering Information:

Code	Description
ACTENT_LITE	ACT Enterprise lite software (download only)
ACTENT	ACTEnterprise pro software
ACTENT_API	API for ACT Enterprise (required for third party integration)
ACTENT-WL	License for Assa Apero locks
ACTENT-Kone	Interface to Kone elevator control

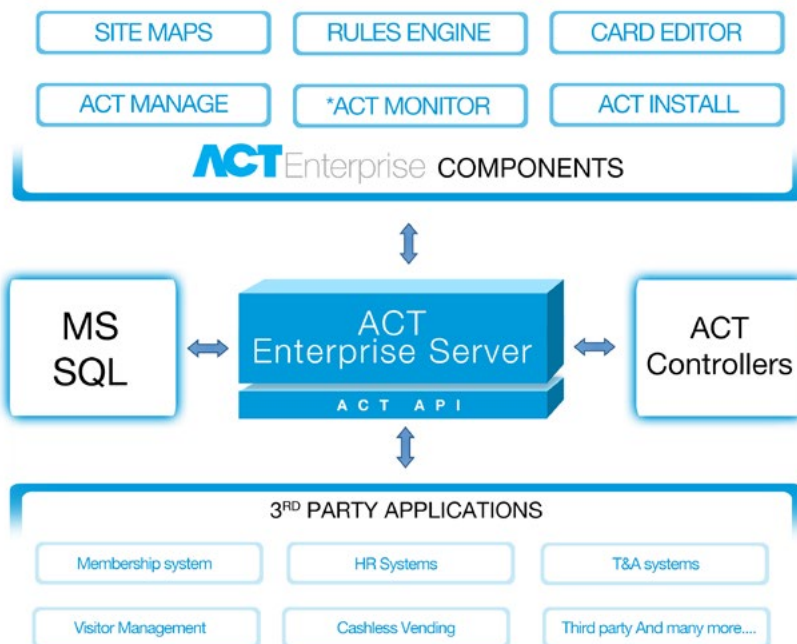
## Operating System

Company Size	Small	Medium	Large
Doors	Up to 100	Up to 250	250+
Users	Up to 1,000	Up to 5,000	5,000+
CPU / Processor	Core i5	Core i7/Xeon	Xeon
OS - 32 or 64 bit	Windows 10 pro	Windows 10 pro Any Microsoft supported server OS	Any Microsoft supported server OS
RAM	4GB	8GB	16GB
Database Disk Space	20GB	50GB	100GB
Database	SQL Compact SQL Express 2008	Any Microsoft supported SQL server (Express or Pro)	Any Microsoft supported SQL server

**Note:** Above are minimal server specification guidelines to host ACT Enterprise software.

Vanderbilt recommend that at a minimum mirrored disks be used and an appropriate database backup solution is implemented.

## System Diagram



\* API Available in ACT Enterprise pro only



### Installation Guidelines

For optimal performance use IP connected controllers

# ACT Enterprise

PC Application Software

## Product Features

	ACT Enterprise pro	ACT Enterprise Lite (Free Version)
Doors	4,000	100
Users - controller limits	60,000	60,000
PC Clients	50	1 PC Server
Wizard & quick start buttons for common tasks	✓	✓
Efficient use of bandwidth	✓	✓
Design & Print ID Cards	✓	✓
System Alarm Acknowledgment	✓	✓
Activate/deactivate intruder alarm	✓	✓
Real-time view of event	✓	✓
Real time door action (Lock, Unlock, Pass, Normalise)	✓	✓
Extra rights	✓	✗
ACT API	✓	✗
Card per user	4	4
Event Log (Limited by Database size)	Unlimited	Unlimited
Elevator Control	✓	✓
Input / Output module	✓	✓
Multi-Tenant	✓	✗
Milestone Integration	✓	✗
Sitemaps	✓	✗
Muster reporting	✓	✓
Anti passback	✓	✓
Counting Areas	✓	✗
Reporting	✓	✓
Security lockdown	✓	✗
Time reporting	✓	✓



**VANDERBILT**

[vanderbiltindustries.com](http://vanderbiltindustries.com)

📞 @VanderbiltInd

🌐 Vanderbilt Industries

**Vanderbilt International Ltd.**

Clonshaugh Business and Technology Park

Clonshaugh, Dublin D17 KV 84, Ireland

☎ +353 1 437 2560